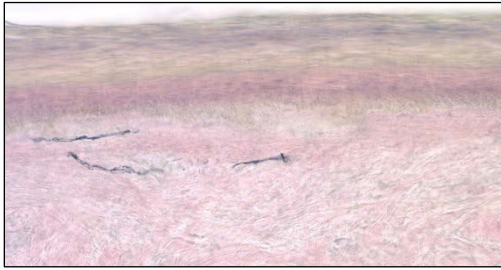
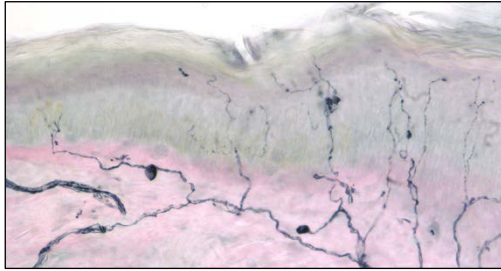


Neuropathy



Normal - Frozen in fix*



**Normal
Frozen in FinalFix**
No nerve fiber loss**

*Many commercial labs allow shipment of biopsies in aqueous-based fixatives. Up to 40% of these biopsies freeze in shipment, resulting in freezing damage artifact and a substantial loss of nerve fibers. This loss may lead to a false diagnosis of peripheral neuropathy.

****Our laboratory fixative, tested over time, allows centers to safely ship biopsies in fixative, without freezing damage artifact.**

“FinalFix”

**Proprietary formula specifically formulated
to eliminate shipping damage**

- ✓ **Protect your patient samples**
- ✓ **A solution that fixes & cryoprotects samples in ONE easy step**
- ✓ **Same day shipping without compromising sample quality**

The University of Utah
Cutaneous Nerve Laboratory
biopsy@hsc.utah.edu
Phone: 801-585-2461
www.CutaneousNerveLab.utah.edu

